



# LIFE REWARDS PLAN



Your guide to  
compensation

# The Life Rewards Plan

With this brochure, you'll find information on how to get paid with the Life Rewards Plan. You'll also discover the many rewards you can enjoy as a 4Life Distributor. It's time to take control of your financial future!

## ENJOY BENEFITS

- Get paid to sell products backed by science.
- Learn from a team of people ready to help you.
- Benefit from one of the highest payouts in the industry—up to 64% of company volume.
- Earn free products through the 4Life Loyalty Program.

# Retail Profit

Purchase 4Life products at the wholesale price and resell the products for a retail profit.

## Example



## LIFE POINTS (LP)

Every 4Life product is assigned a Life Point or LP value used to calculate distributor commissions.

# Instant Discount

Both Preferred Customers and Distributors receive a 25% instant discount—at checkout—on all personal volume over 100 LP.

## Example



\*The instant discount is not applicable to your first order with 4Life.



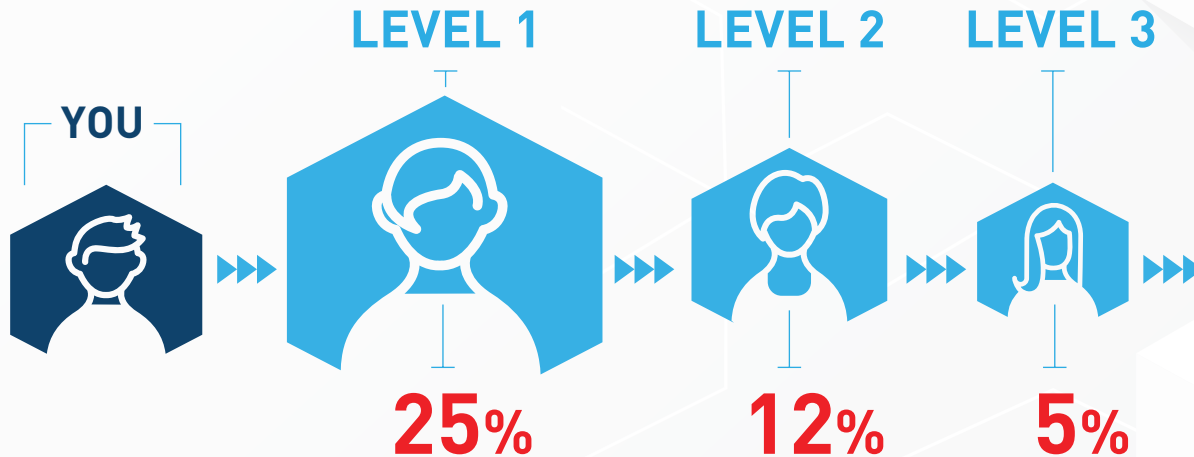
## TERMS TO KNOW

Find important 4Life terms in the Glossary at the end of the brochure.



# RAPID REWARDS™

With Rapid Rewards, you earn 25% commission on the first LP order of every new Preferred Customer you personally enroll. You also earn 12% on the first LP order of every new Preferred Customer on your second level. Plus, you earn 5% on the first LP order of every new Preferred Customer on your third level. Rapid Rewards is paid the very next day to your 4Life account when you've qualified with 100 PV in the current month.



The first, second, and fourth level payouts for the first LP orders are shifted. The enroller receives 25% and the immediate upline of the enroller receives 12%. The next two immediate qualified uplines distributors receive 5% and 2%, respectively. The remaining payout continues according to the Life Rewards Plan until all levels are paid out.

#### TERMS AND CONDITIONS

1. Rapid Rewards are applicable to all ranks of Associate and above.
2. To receive a Rapid Reward, a distributor must qualify for a distributor rank (with at least 100 PV) in the current month.
3. If a distributor has not yet achieved 100 PV in the current month, the Rapid Reward will be retained by 4Life and paid to the distributor's 4Life account the day after they achieve 100 PV, or it will be paid with the generational bonus.
4. Qualify as a Diamond or higher and receive the fourth generation 2% commission with the generational bonus. The entire 2% commission of the fourth generation will be paid to the first eligible Diamond (or higher) and will not be split (as with Infinity Pass Through).

# Earn Commissions

The first step in your journey is to enroll your first person in 4Life and qualify at the Associate level!



Associate



Builder



Diamond

1st Level
2nd Level
3rd Level
4th Generation

	Associate	Builder	Diamond
1st Level	2%	2%	2%
2nd Level	25%	25%	25%
3rd Level		5%	5%
4th Generation			6% <sup>^</sup>



<sup>^</sup>When 6% is paid to a Diamond, the additional 6% is paid to the next Presidential Diamond or higher in the upline. This is called Infinity Pass Through.

# BUILDER BONUS

The Builder Bonus will help you start your 4Life organization off the right way. To earn the Builder Bonus, you must qualify at the Builder rank, maintain a 100 LP Loyalty Program order, and fulfill the required Team Volume.\*


## SGD85 Builder Bonus

### You earn SGD85 when you:

- Have 3 personally enrolled Preferred Customers or Distributors on your frontline, each with at least 100 LP in Loyalty Program orders
- Have 600 LP in Team Volume
- Qualify as a Builder



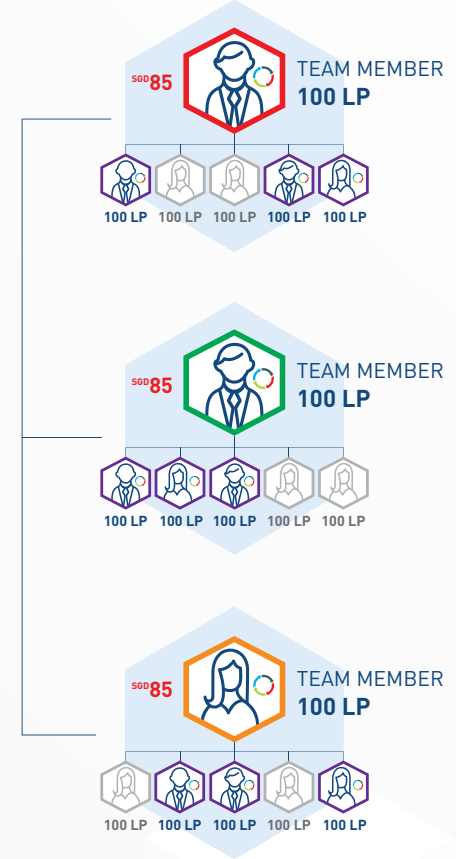
\*Team Volume=Your Principal Volume, plus the orders of your frontline Preferred Customers and Distributors

 Distributors must maintain a monthly 100 LP Loyalty Program order to qualify for the Builder Bonus.

# SGD340 Builder Bonus

## You earn SGD340 when you:

- Have 3 frontline Distributors, each with 3 qualified (100 LP Loyalty Program order), personally enrolled Preferred Customers or Distributors on their frontline with a minimum of 600 LP in Team Volume
- Qualify as a Builder or Diamond

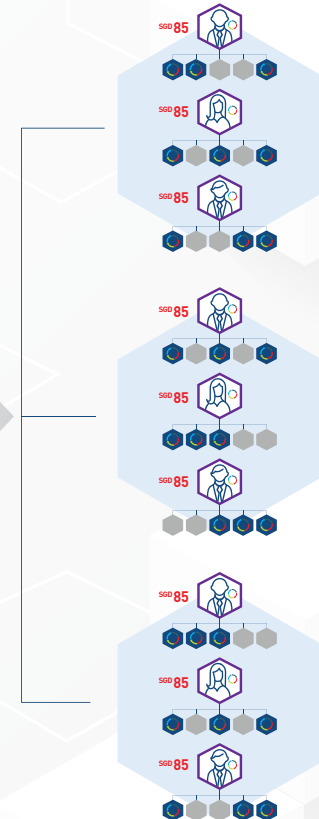
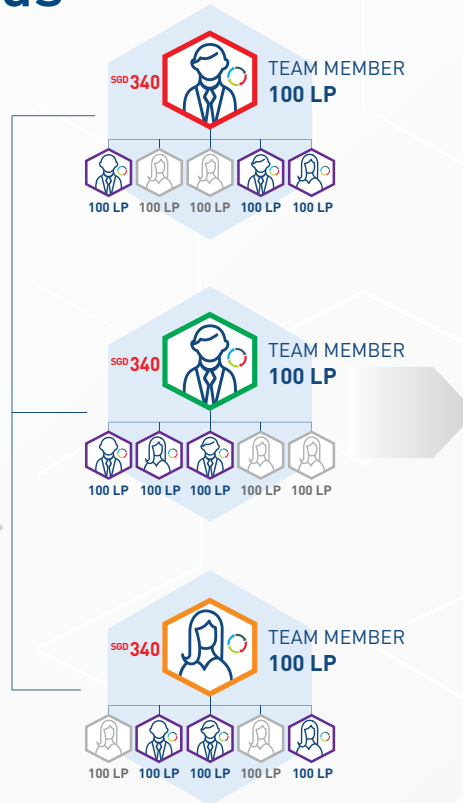




# SGD1,360 Builder Bonus

## You earn SGD1,360 when you:

- Have 9 qualified Distributors on your second level, each with 3 qualified (100 LP Loyalty Program order), personally enrolled Preferred Customers or Distributors under them with a minimum of 600 LP in Team Volume
- Qualify as a Builder, Diamond, or Presidential Diamond



 Distributors must maintain a monthly 100 LP Loyalty Program order to qualify for the Builder Bonus.

# Qualifications



Associate



Builder



Diamond



Presidential  
Diamond



International  
Diamond



Gold  
International  
Diamond\*



Platinum  
International  
Diamond

	Associate	Builder	Diamond	Presidential Diamond	International Diamond	Gold International Diamond*	Platinum International Diamond
Monthly PV*	100	100	100	100	100	100	100
Personally enrolled Preferred Customers or Distributors at 100 PV/month**	1***	3	6	8	10	12	12
Monthly LP on first 3 levels without compression	0	0	3,000	10,000	20,000	20,000	20,000
Legs**	0	0	0	2 Diamonds	2 Presidential Diamonds	3 International Diamonds***	3 Gold International Diamonds
Monthly Organizational Volume (OV)	Not Applicable	Not Applicable	Not Applicable	Not Applicable	Not Applicable	250,000	1,000,000

\*Principal Volume (PV): The total LP for products purchased by you to consume or sell for a retail profit and products purchased by customers on your My4Life account.

\*\*Legs must be separate and have at least one Distributor at the indicated rank or higher. Qualifying Distributors in the legs do not have to be frontline.

\*\*\*Must have at least three International Diamond legs, each with at least 50,000 OV to qualify.

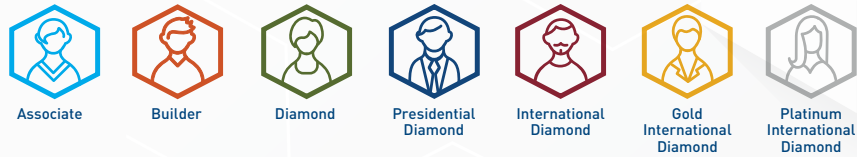
†Prior to achieving the Gold International Diamond rank for the first time, Distributors must reach the International Diamond, 150,000 OV level at least one time (qualified International Diamond, 150,000 OV, and three legs with 15,000 LP each).

††At least half must be frontline. For the Associate and Builder ranks, all must be frontline.

†††There is no enrollee PV requirement at the Associate rank.

# Infinity Payout

Most network marketing companies stop paying commissions past the fourth level. 4Life is different! Infinity Payout can pay multiple levels at each generation, beginning at the Diamond rank. The payout for each generation continues for an infinite number of levels until reaching a Distributor of like or higher rank, at which time you are interrupted and begin receiving the payout for the next earned generation.



COMMISSIONS	BONUSES						
	Builder Bonus, Great Escape trip, Platinum Pinnacle/Gold Getaway, and President's Club benefits				Premier Pool Bonus (2% of company LP*)		Platinum Pool Bonus (1% of company LP*)
1st Level	2%	2%	2%	2%	2%	2%	2%
2nd Level	25%	25%	25%	25%	25%	25%	25%
3rd Level		5%	5%	5%	5%	5%	5%
4th Generation^			6%^	12%	12%	12%	12%
5th Generation				3%	3%	3%	3%
6th Generation				3%	3%	3%	3%
7th Generation					2%	2%	2%
8th Generation					2%	2%	2%
9th Generation						2%	2%
10th Generation						2%	2%

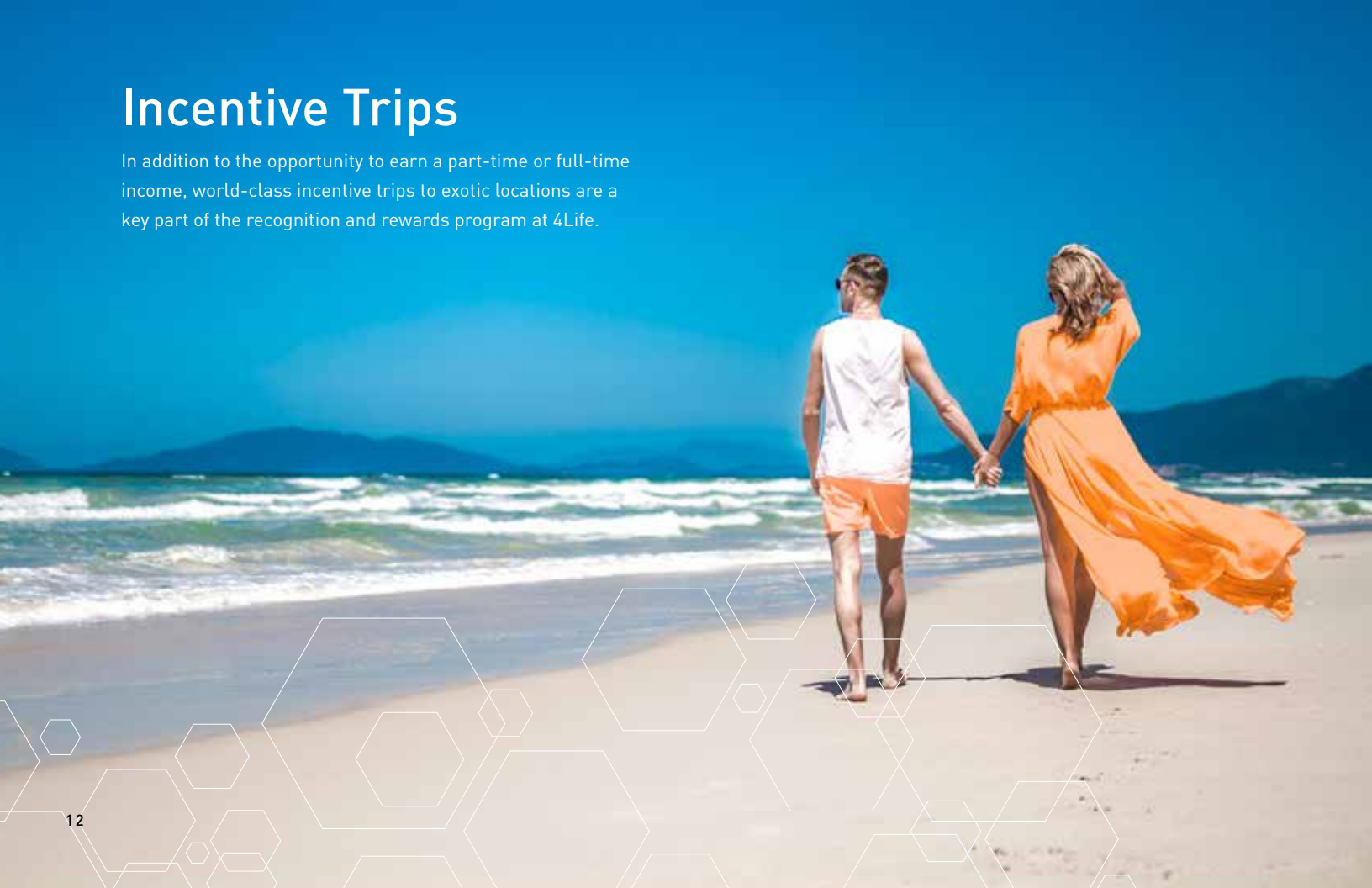
\*LP: The commissionable sales value assigned to 4Life products

^When 6% is paid to a Diamond, the additional 6% is paid to the next Presidential Diamond or higher in the upline. This is called Infinity Pass Through.



# Incentive Trips

In addition to the opportunity to earn a part-time or full-time income, world-class incentive trips to exotic locations are a key part of the recognition and rewards program at 4Life.



# Getting Started

4Life Distributors can build their businesses in a way that meets personal and financial goals. If that's something that interests you, read the five tips below to get started on the path to success with 4Life!

## 1. Make a plan with your upline leader.

Contact your upline leader (the person who enrolled you) right away. He or she is your best resource to quickly earn your first check and succeed with 4Life.

## 2. Download the 4Life Connect app.

Download 4Life Connect from the App Store or Google Play to share videos, images, PDFs, and more... all from your mobile device.

## 3. Begin your online training with 4Life University.

4Life University features a proven, step-by-step system to help you build your business, set up your personal My4Life account, learn about products, and much more. Log into your [singapore.4life.com](http://singapore.4life.com) Account and click "4Life University" to get started.

## 4. Set up your free My4Life account.

Once you sign up your first person in 4Life, you can take advantage of a free My4Life account. My4Life makes reselling products and enrolling new team members easier than ever before. When someone enrolls or purchases products on your My4Life account, you get the credit!

## 5. Get connected.

As part of the 4Life family, it's critical to be in-the-know! Follow us on social media to stay up to date on announcements, promotions, product education, and more.



# Glossary

## Upline

The line of Distributors directly above you

## Enroller

The person who introduced you to 4Life (may also be your sponsor)

## Sponsor

The person in your upline who is directly above you (may also be your enroller)



## Team Volume

Your Principal Volume, plus the orders of your frontline Preferred Customers and Distributors

## Frontline

Your first level of Preferred Customers and Distributors sponsored by you

## Three-Level Volume

Composed of your total Principal Volume (PV) and the combined PV of people on your first three levels

## Retail Customers

Those who purchase 4Life products from Distributors at the retail price



## Downline

The line of Distributors that runs directly below you

## Leg

A part of your downline that starts with a Distributor sponsored by you and continues below that Distributor

## Life Points (LP)

Every 4Life product is assigned a Life Point or LP value used to calculate distributor commissions.

## Principal Volume (PV)

PV is the total LP for products purchased by:

- You to consume or sell for a retail profit
- Customers on your My4Life account

## Organizational Volume (OV)

The LP from your personal purchases, customer accounts, and all Distributors and customers in your downline. This volume is important when qualifying for higher ranks.

## Rapid Rewards

25% commission paid on all My4Life customer orders and the first LP order of every new Preferred Customer you personally enroll.\* Rapid Rewards is paid the very next day when qualifying as an Associate or above (based on the previous month's rank).

## 4Life Loyalty Program

This program rewards Distributors and Preferred Customers for their loyalty in ordering 4Life products every month. Order your favorite products every month and earn 15% in Product Credits. You can redeem Product Credits for free products. Plus, order 125 LP or more for two months to receive the bonus product of the month.

## Compression

Distributors in your downline who don't qualify as an Associate or higher are removed for that month when commissions are calculated.

## Builder Bonus

This is a financial bonus that reinforces key distributor behaviors of enrollment, duplication, and retention.<sup>†</sup>

\*The first, second, and fourth level payouts for the first LP orders are shifted. The enroller receives 25% and the immediate upline of the enroller receives 12%. The next two immediate qualified uplines distributors receive 5% and 2%, respectively. The remaining payout continues according to the Life Rewards Plan until all levels are paid out.

<sup>†</sup>Builder Bonus program is available to Builders, Diamonds, and Presidential Diamonds.



TOGETHER, BUILDING PEOPLE®

\*Distributor earnings vary as a result of numerous factors. Earnings statements made in this brochure are not intended to guarantee a particular outcome, but rather show what is possible based on a broad range of 4Life Distributors' historical data, personal commitment, and skill level. All references to income, implied or stated, through the Life Rewards Plan are for illustration purposes only.

ForLife Research Singapore Pte Ltd (Reg. No. 200312919C)  
10 Eunos Road 8, #12-10, Singapore Post Centre, Singapore 408600.  
Tel: 6735 2988 Fax: 6733 7688

20200401 V6