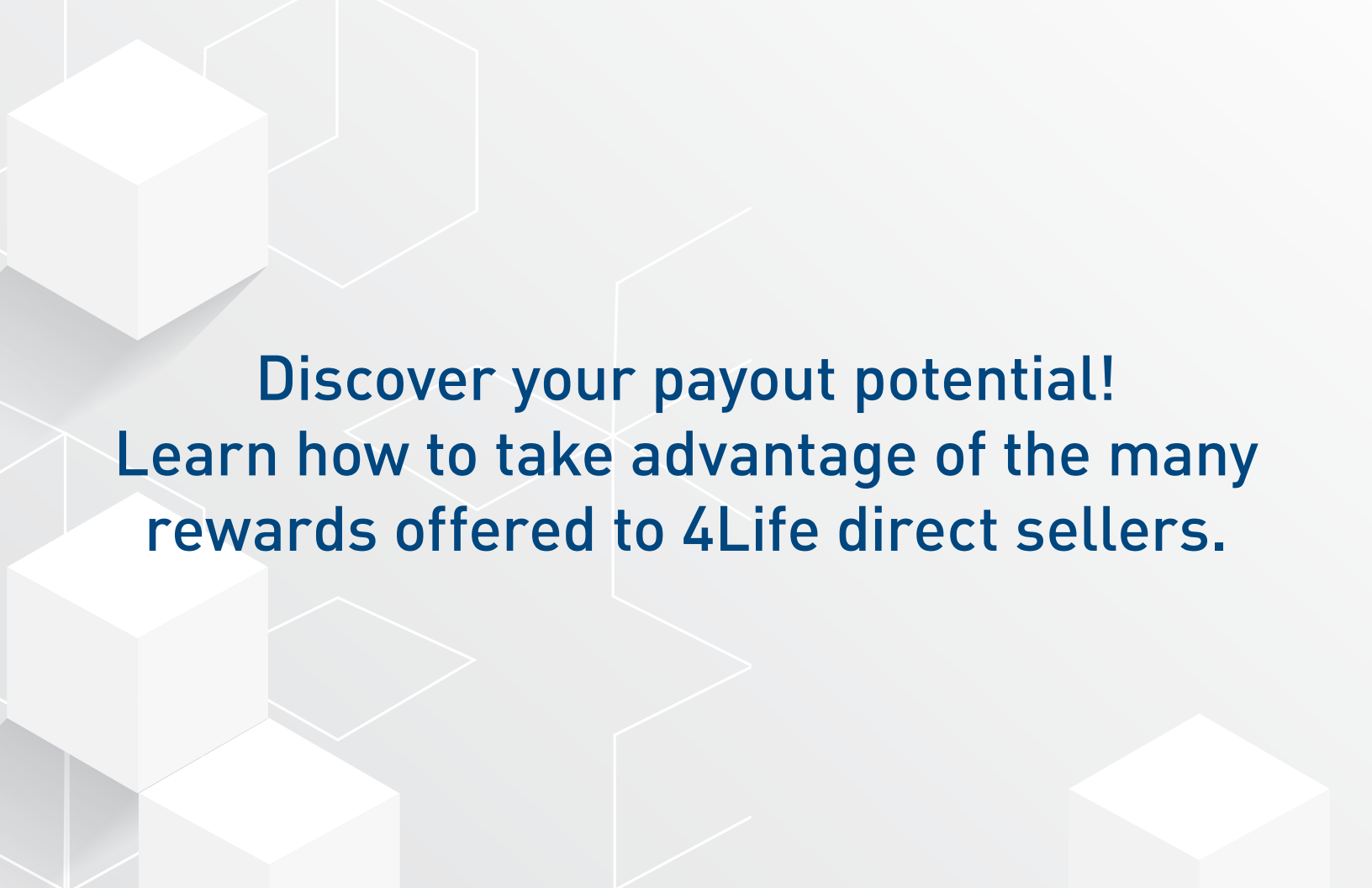


# LIFE REWARDS PLAN™



Your guide to  
compensation





**Discover your payout potential!  
Learn how to take advantage of the many  
rewards offered to 4Life direct sellers.**



## ENJOY BENEFITS

- Get paid to sell products backed by science.
- Learn from a team of people ready to help you.
- Benefit from one of the highest payouts in the industry—up to 64%\* of company volume.
- Earn free products through the 4Life Loyalty Program.

\*1\$ payout would be equal to ₹43/-

# Retail Customer Profit

Purchase 4Life products at the wholesale price and resell the products for a retail profit.



# Instant Discount

Direct sellers receive a 25% instant discount—at checkout—on all personal volume over 100 LP.



50 LP

50 LP

50 LP

50 LP

LIFE POINTS (LP)

50 LP x 4 =  
200 LP



Discount =  
₹1075

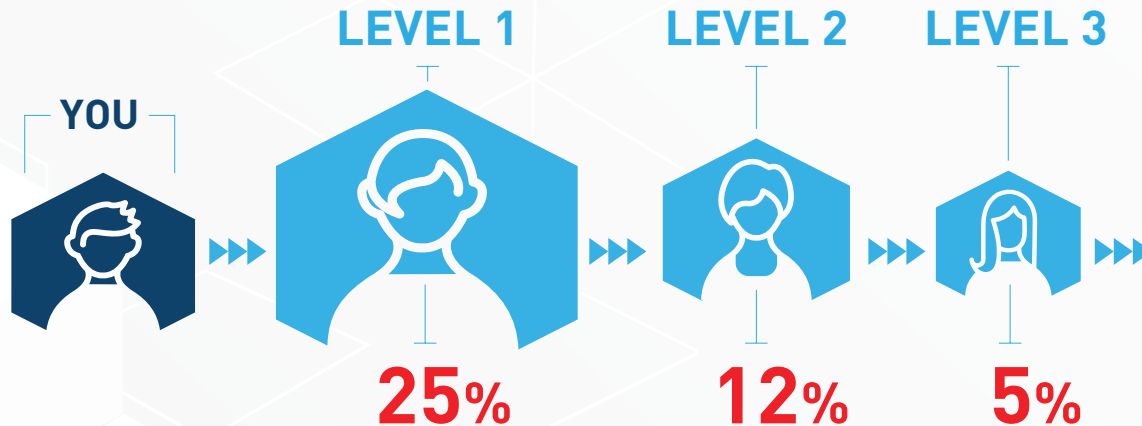
Every 4Life product is assigned a Life Point or LP value used to calculate direct sellers commissions.

# RAPID REWARDS™

With Rapid Rewards, you earn 25% commission on the first LP order of every new direct seller you personally introduce.

You also earn 12% on the first LP order of every new direct seller on your second level, and 5% on the first LP order of every new direct seller on your third level.

Rapid Rewards is paid the very next day to your 4Life account when you've qualified with 100 PV in the current month.



Effective January 1, 2020. The first, second, and fourth level payouts for the first LP orders are shifted. The enroller receives 25% and the immediate upline of the enroller receives 12%. The next two immediate qualified upline direct sellers receive 5% and 2%, respectively. The remaining payout continues according to the Life Rewards Plan until all levels are paid out. To be eligible to receive a Rapid Rewards payment the very next day, a direct seller must have 100 PV in the current month.



Earn a 25% on the LP of product orders placed by customers on your MyShop account. MyShop is a personal website provided by 4Life upon signup.



+



=



Example assumes 100 LP volume requirement has been met. 1\$ payout would be equal to ₹43/-

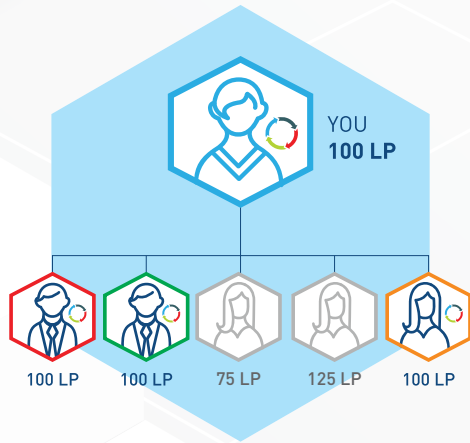


# BUILDER BONUS™

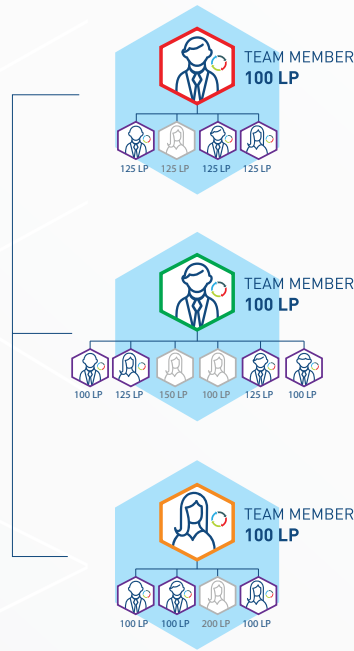
Earn Builder Bonus on a monthly basis of Rs. 2250, Rs.9000, or Rs. 36,000.

Each bonus is achieved through structure and sales team volume.

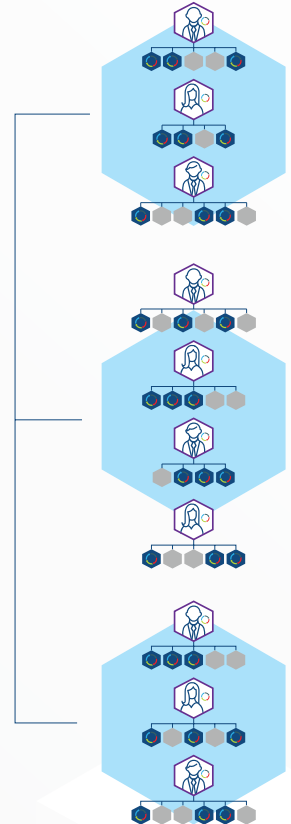
Rs. 2250




Rs. 9000



Rs. 36000



 One must maintain a monthly 100 LP (or more) Loyalty Program order to qualify for the Builder Bonus.



# Team Commissions

Form a solid foundation and grow your sales team to ensure maximum payout potential.



Associate



Builder



Diamond

1st Level
2nd Level
3rd Level
4th Generation

	Associate	Builder	Diamond
1st Level	2%	2%	2%
2nd Level	25%	25%	25%
3rd Level		5%	5%
4th Generation			6% <sup>^</sup>



\*When 6% is paid to a Diamond, the additional 6% is paid to the next Presidential Diamond or higher in the upline. This is called Infinity Pass Through and does not apply to first orders.

# Qualifications



Associate



Builder



Diamond



Presidential  
Diamond



International  
Diamond



Gold  
International  
Diamond\*



Platinum  
International  
Diamond

	Associate	Builder	Diamond	Presidential Diamond	International Diamond	Gold International Diamond*	Platinum International Diamond
Monthly PV*	100	100	100	100	100	100	100
Personally enrolled direct sellers at 100 PV/month**	1***	3	6	8	10	12	12
Monthly LP on first 3 levels without compression	0	0	3,000	10,000	20,000	20,000	20,000
Legs**	0	0	0	2 Diamonds	2 Presidential Diamonds	3 International Diamonds***	3 Gold International Diamonds
Monthly Organizational Volume (OV)	Not Applicable	Not Applicable	Not Applicable	Not Applicable	Not Applicable	250,000	1,000,000

\*Principal Volume (PV): The total LP for products purchased by you to consume or sell for a retail profit and products purchased by customers on your MyShop account.

\*\*Legs must be separate and have at least one direct seller at the indicated rank or higher. Qualifying direct sellers in the legs do not have to be frontline.

\*\*\*Must have at least three International Diamond legs, each with at least 50,000 OV to qualify.

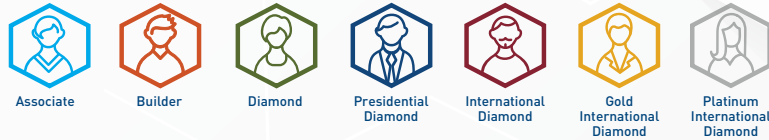
+Prior to achieving the Gold International Diamond rank for the first time, direct sellers must reach the ID 150 K level at least one time (qualified International Diamond, 150,000 OV, and three legs with 15,000 LP each).

\*\*At least half must be frontline. For the Associate and Builder ranks, all must be frontline.

\*\*\*There is no enrollee PV requirement at the Associate rank.

# Infinity Payout

Most network marketing companies stop paying commissions past the fourth level. 4Life is different! Infinity Payout can pay multiple levels at each generation, beginning at the Diamond rank. The payout for each generation continues for an infinite number of levels until reaching a direct seller of like or higher rank, at which time you are blocked and begin receiving the payout for the next earned generation.



COMMISSIONS		BONUSES						
		Builder Bonus, Great Escape Trip, and President's Club luxury getaway and benefits				Premier Pool Bonus (2% of company LP*)		Platinum Pool Bonus (1% of company LP*)
1st Level	→	2%	2%	2%	2%	2%	2%	2%
2nd Level	→	25%	25%	25%	25%	25%	25%	25%
3rd Level	→		5%	5%	5%	5%	5%	5%
4th Generation^	→			6%^	12%	12%	12%	12%
5th Generation	→				3%	3%	3%	3%
6th Generation	→				3%	3%	3%	3%
7th Generation	→					2%	2%	2%
8th Generation	→					2%	2%	2%
9th Generation	→						2%	2%
10th Generation	→						2%	2%

\*LP: The commissionable sales value assigned to 4Life products  
 ^When 6% is paid to a Diamond, the additional 6% is paid to the next Presidential Diamond or higher in the upline. This is called Infinity Pass Through and does not apply to first orders.



# Incentive Trips

In addition to the opportunity to earn a part-time or full-time income, world-class incentive trips to exotic locations are a key part of the recognition and rewards program at 4Life.<sup>†</sup>





\* Less than 1% of 4Life direct sellers qualify for incentive trips.

# Glossary

## Upline

The line of direct sellers directly above you

## Enroller

The person who introduced you to 4Life (may also be your sponsor)

## Sponsor

The person in your upline who is directly above you (may also be your enroller)



## Team Volume

Your Principal Volume, plus the orders of your frontline sales team

## Frontline

Your first level of direct sellers introduced by you

## Three-Level Volume

Composed of your total Principal Volume (PV) and the combined PV of people on your first three levels

## Retail Customers

Those who purchase 4Life products from direct sellers at the Retail Price



## Downline

The line of Direct Sellers that runs directly below you

## Leg

A part of your downline that starts with a direct seller sponsored by you and continues below that direct seller

## Life Points (LP)

Every 4Life product is assigned a Life Point or LP value used to calculate direct seller Commissions.

## Principal Volume (PV)

PV is the total LP for products purchased by:

- You to consume or sell for a retail profit
- Customers on your MyShop account

## Organizational Volume (OV)

The LP from your personal purchases myshop account and all direct sellers in your downline. This volume is important when qualifying for higher ranks.

## Rapid Rewards

You earn 25% commission on the first LP order of every new direct seller you personally sign up. Earn 12% on the first LP order of direct seller on your second level, and 5% on the first LP order of direct seller on your third level.\*  
(Effective January 1, 2020)

## 4Life Loyalty Program

This program rewards direct sellers for their loyalty in ordering 4Life products every month. Order your favorite products every month and earn 15% in Loyalty Points. You can redeem Loyalty Points for free products. Plus, order 125 LP or more to receive the bonus product of the month.

## Compression

Direct sellers in your downline who don't qualify as an Associate or higher are removed for that month when commissions are calculated.

## Builder Bonus

This is a financial bonus to reinforce key behaviors with which the direct seller can earn upto Rs. 36,000 each month.†

\*Effective January 1, 2020. The first, second, and fourth level payouts for the first LP orders are shifted. The enroller receives 25% and the immediate upline of the enroller receives 12%. The next two immediate qualified uplines direct sellers receive 5% and 2%, respectively. The remaining payout continues according to the Life Rewards Plan until all levels are paid out. To be eligible to receive a Rapid Rewards payment the very next day, a direct seller must have 100 PV in the current month.

†Builder Bonus program is available to Builders, Diamonds, and Presidential Diamonds.



\*Direct seller earnings vary as a result of numerous factors. Earnings statements made in this brochure are not intended to guarantee a particular outcome, but rather show what is possible based on a broad range of 4Life direct sellers' historical data, personal commitment, and skill level. All references to income, implied or stated, through the Life Rewards Plan are for illustration purposes only.

01012021 ENG ©2020 4Life Trademarks, LLC. All Rights Reserved. For use in the india only.