

LIFE REWARDS PLAN™



Your guide to
compensation



THE LIFE REWARDS PLAN™

With this brochure, you'll find information on how to get paid with the Life Rewards Plan. You'll also discover the many rewards you can enjoy as a 4Life distributor. It's time to take control of your financial future!



ENJOY LIFE!

- Establish and meet your financial goals
- Serve people in your community
- Connect with team members and achieve goals together



THE BENEFITS

- Get paid to sell products backed by science
- Learn from a team of people ready to help you
- Benefit from one of the highest payouts in the industry—up to 64% of commissionable volume
- Earn free products through the 4Life Loyalty Program



GETTING STARTED

As a 4Life® distributor, you can build your business in a way that will meet your personal and financial goals. Whether you want a part-time business for extra income or a long-term career to secure your future, 4Life has a path for you.

Make a plan with your upline leader

Contact your upline leader (the person who enrolled you) right away. He or she is your best resource to quickly earn your first check and succeed with 4Life.

Set goals

Decide how many people you want to contact each day to share 4Life products and the opportunity.

Begin your online training with 4Life University.

4Life University features a proven, step-by-step system to help you build your business, set up your personal My4Life account, learn about products, and much more. Log into your 4life.com Account and click "4Life University" to get started.

Download the 4Life Connect app.

Download 4Life Connect from the App Store or Google Play to share videos, images, PDFs, and more ... all from your mobile device.

Share 4Life

Share 4Life products and the business opportunity on a regular basis. You can do this in-person, over the phone, or online. Ask your upline leader for additional tips.

Build customers

Not every person you meet will want to pursue the business opportunity, but 4Life has products for every need. Building a solid customer base is necessary to grow your business.

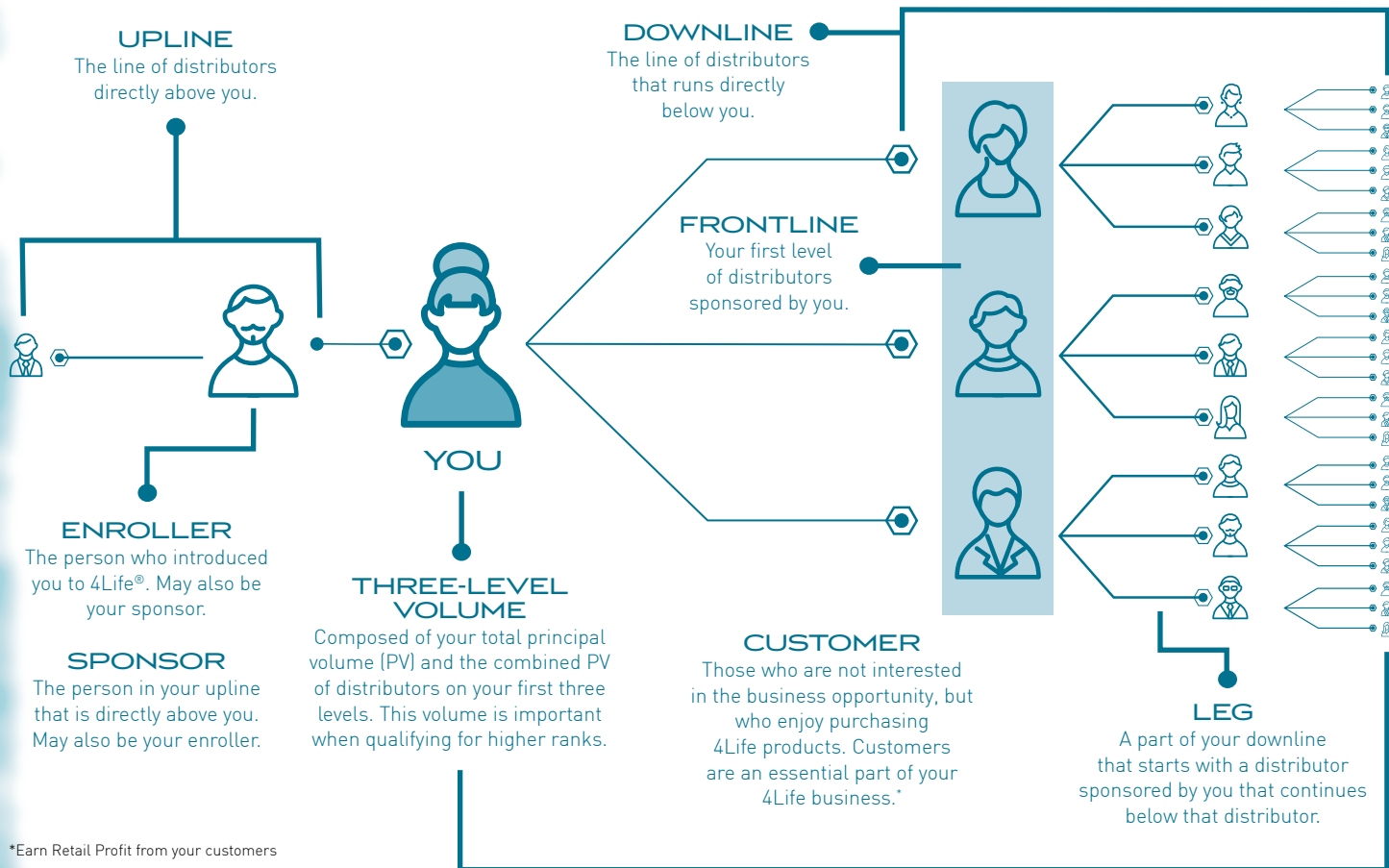
STRATEGIES

Take advantage of rewards

4Life offers generous incentive programs, like Builder Bonus, Great Escape, and the 4Life Loyalty Program, to help you build short-term and long-term growth.

Develop business partners

As you build your business, select the partners you want on your frontline. These are the individuals who will help your business succeed and help you reach your goals.



TERMS TO KNOW

① Life Points (LP)

Every 4Life® product (excluding distributor incentives and tools) is assigned a Life Point or LP value used to calculate distributor commissions.

② Principal Volume (PV)

PV is the total LP for product purchases from:

- Products you purchase to consume or sell for a retail profit.
- Customer purchases made directly on your distributor account OR my 4life website.

③ Team Volume (TV)

The LP from your personal purchases, and all distributors in your Frontline. This volume is important when qualifying for Builder Bonus.

④ Organizational Volume (OV)

The LP from your personal purchases, and all distributors in your downline. This volume is important when qualifying for higher ranks.

⑤ Rapid Rewards

25% commission paid on all PV above 100 LP* in the form of upfront instant discount and 25% of the first LP order of every new distributor you personally enroll.** Paid the very next day when qualifying as an Associate or above.

⑥ Loyalty Program

- Order your favorite products on automatic shipment and receive up to 15% back in Product Credits.
- Redeem Product Credits for the free products of your choice.
- Bonus: Order 125 LP or higher to receive the bonus product of the month.



⑦ Compression

Distributors in your downline who don't place an order are removed for that month when commissions are calculated.

⑧ Builder Bonus

Unlock the power of Me and My 3™ by earning either Rs. 2250, Rs. 9000, or Rs. 36000 every single month†.

*The first and second level payouts are reversed.

**The first and second level payouts for the first LP order are reversed. The enroller receives 25% and the immediate upline distributor receives 2%. The next upline distributor receives 5%. The remaining payout continues according to the plan until all levels are paid out. (This applies only to first orders.)

†Builder Bonus program is available to Presidential Diamonds and below. Program is slightly modified for markets where 4Life does not have an office. Please read the Terms and Conditions on the country website.



HOW DO I GET PAID?

From the first-timer all the way up to the veteran networker, the Life Rewards Plan™ offers compensation opportunities for everyone.

Retail Profit

To get started, purchase 4Life® products at wholesale cost and resell the products for a retail profit. Purchasing product packs will give you greater product savings and, therefore, greater retail profit earning potential.



Commission and Rapid Rewards

Your 4Life monthly commission is based on the total LP value of products sold in your organization. As a distributor you will benefit from 4Life's incredible payouts—up to 64% of commissionable volume! You can receive your first commission payment the very next day with Rapid Rewards!





Team Building

As your organization grows, earned commissions are based on organizational volume and rank. Organizational volume is the LP generated through all commissionable product orders placed by you and your entire downline. As you build your business, you will advance in rank and continue growing your three-level volume and organizational reach.

Extra Incentives

Distributors have the chance to qualify for all-expense-paid trips to exotic locations (The Great Escape),* as well as cash prizes, and other incentive-driven contests.

Infinity Payout

The power of 4Life's Infinity Payout is its ability to pay multiple levels for each generation beginning at the Diamond rank. This unique aspect of the Life Rewards Plan™ can far exceed the payout depth of other network marketing companies. The payout for each generation continues for an infinite number of levels until reaching a distributor of like or higher rank, at which time you begin receiving the payout for the next earned generation.

4Life® Loyalty Program

Earn free products when you participate in the 4Life Loyalty Program! Receive 15% back in Product Credits to redeem for the products of your choice. Place a 125 LP or higher Loyalty Program order every month to receive the bonus product of the month. Visit www.4life.com/loyalty to enroll.

Bonuses

Your monthly bonus commission represents your primary distributor earnings. This bonus is calculated based upon your rank and the volume of your organization.

Builder Bonus

To earn the Builder Bonus** on a monthly basis, you must qualify at the Builder rank, receive a 100 LP 4Life Loyalty Program order, and fulfill the required Team Volume. (Team Volume includes your Principal Volume, plus the orders of your frontline Preferred Customers and distributors.)

A distributor may earn each month either the Rs. 2250, Rs. 9000, or Rs. 36000 bonus, but not all three at one time.

*Less than 1% of 4Life distributors qualify for incentive trips.

**Builder Bonus is available to Presidential Diamonds and below.

Program is slightly modified for markets where 4Life does not have an office. Please read the Terms and Conditions on the country website.

QUALIFICATIONS



Associate



Builder



Diamond



Presidential
Diamond



International
Diamond



Gold
International
Diamond*



Platinum
International
Diamond

Monthly PV*	100	100	100	100	100	100	100
Personally enrolled distributors at 100PV/month** (At least half must be frontline)	1 ^{***}	3	6	8	10	12	12
Monthly LP on first 3 levels without compression	0	0	3,000	10,000	20,000	20,000	20,000
Legs**	0	0	0	2 Diamonds	2 Presidential Diamonds	3 International Diamonds***	3 Gold International Diamonds
Monthly organizational volume (OV)	Not Applicable	Not Applicable	Not Applicable	Not Applicable	Not Applicable	250,000	1,000,000

*Principal Volume (PV). The total LP of products you purchase to consume or sell for a retail profit, and purchases made directly on your distributor account.

**Legs must be separate and have at least one distributor at the indicated rank or higher. Qualifying distributors in the legs do not have to be frontline.

***Must have at least three International Diamond legs, each with at least 50,000 OV to qualify

*Prior to achieving the Gold International Diamond rank for the first time, distributors must reach the ID 150 K level at least one time.

**At least half must be frontline. For the Associate and Builder rank, all must be frontline.

***There is no enrollee PV requirement at the Associate rank.

REWARDS



Associate



Builder



Diamond



Presidential
Diamond



International
Diamond



Gold
International
Diamond



Platinum
International
Diamond

	Builder Bonus, and Great Escape trip				Premier Pool Bonus (2% of company LP*)		Platinum Pool Bonus (1% of company LP*)
1st Level	2%	2%	2%	2%	2%	2%	2%
2nd Level	25%	25%	25%	25%	25%	25%	25%
3rd Level		5%	5%	5%	5%	5%	5%
4th Generation^			6%^	12%	12%	12%	12%
5th Generation				3%	3%	3%	3%
6th Generation				3%	3%	3%	3%
7th Generation					2%	2%	2%
8th Generation					2%	2%	2%
9th Generation						2%	2%
10th Generation						2%	2%

COMMISSIONS

The power of 4Life's Infinity Payout is its ability to pay multiple levels for each generation beginning at the Diamond rank. The payout for each generation continues for an infinite number of levels until reaching a distributor of like or higher rank, at which time you begin receiving the payout for the next earned generation.



*LP: The commissionable sales value assigned to 4Life products

^When 6% is paid to a Diamond, the additional 6% is paid to the next Presidential Diamond or higher in the upline. This is called Infinity Pass Through.

● PREFERRED CUSTOMER

Everyone who joins 4Life®, enrolls as a Preferred Customer. As a Preferred Customer, you are able to purchase 4Life Products at the Wholesale/Distributor Price, enjoy 25% Instant discount on all orders over 100LP & above, also one can participate in the 4Life Loyalty Program.

Benefits

- Get Instant Discount 25% over 100 LP in PV
- Earn Retail Profit Up to 33%
- Participate and earn in Loyalty Program
 - 15% as Product Credit
 - Free Product of the month on doing 125 LP in Loyalty Program



250 PV

You

25%

x 150 LP*

=

₹1612

1\$ payout would be equal to ₹43/-

*For Rapid Reward :- 25% paid on any LPs over 100LP purchased on your 4Life ID paid as instant upfront discount on your order.

*Distributor earnings vary as a result of numerous factors. Earnings statements made in this brochure are not intended to guarantee a particular outcome, but rather show what is possible based on a broad range of 4Life distributors' historical data, personal commitment, and skill level. All references to income, implied or stated, through the Life Rewards Plan are for illustration purposes only.

**LP: The commissionable sales value assigned to 4Life® products

RANK ADVANCEMENT

As you build your 4Life® business and share products, you should continuously work to achieve higher ranks. Remember, your monthly commission is based on the organizational volume of your downline distributors. As you move up to the next rank, you can enjoy greater earning potential.

1 st Level
2 nd Level
3 rd Level
4 th Generation
5 th Generation
6 th Generation



Associate



Builder



Diamond



Presidential
Diamond

Associate	Builder	Diamond	Presidential Diamond
2%	2%	2%	2%
25%	25%	25%	25%
→	5%	5%	5%
→		6%	12%
→			3%
→			3%

Infinity

◎ ASSOCIATE

As you take your first step to enroll somebody else in the 4Life® opportunity, you qualify as an Associate. As an Associate, you are eligible for Rapid Reward payment for the first order of your enrollee, 25% Rapid Reward on your LP's over 100LP purchase on your 4Life ID as an instant upfront discount and earn the first two levels of payout, according to the Life Rewards Plan.

Requirements to Qualify

- ◎ Maintain a monthly minimum of 100 PV
- ◎ Personally enroll at least one distributor on your frontline, who also maintain 100 PV



250 PV

2 Distributors

4 Distributors

You	25%	x 150 LP [#]	=	₹1612
1 st Level	2%	x 200 LP ^{**}	=	₹172
2 nd Level	25%	x 400 LP ^{**}	=	₹4300



Example income: ₹6084 per month (not including retail profit & Builder Bonus)

1\$ payout would be equal to ₹43/-

[#]For Rapid Reward :- 25% paid on any LPs over 100LP purchased on your 4Life ID paid as instant upfront discount on your order.

^{*}Distributor earnings vary as a result of numerous factors. Earnings statements made in this brochure are not intended to guarantee a particular outcome, but rather show what is possible based on a broad range of 4Life distributors' historical data, personal commitment, and skill level. All references to income, implied or stated, through the Life Rewards Plan are for illustration purposes only.

^{**}LP: The commissionable sales value assigned to 4Life® products

BUILDER

Once you qualify as a Builder, you will start earning the first three levels of payout, according to the Life Rewards Plan and earn extra incentive through builder bonus become eligible for Rapid Rewards. You are also eligible to earn 25% Rapid Reward paid on any LPs over 100 LP purchased on your 4Life® ID and earn extra incentive through Builder Bonus.



250 PV

Requirements to Qualify

- Maintain a monthly minimum of 100 PV
- Personally enroll at least three distributors on your frontline, who each also maintain 100 PV

3 Distributors

9 Distributors

9 Distributors

You	25%	x 150 LP*	=	₹1612
1 st Level	2%	x 300 LP**	=	₹258
2 nd Level	25%	x 900 LP**	=	₹9675
3 rd Level	5%	x 900 LP**	=	₹1935



Example income: ₹13480 per month (not including retail profit & Builder Bonus)

*For Rapid Reward :- 25% paid on any LPs over 100LP purchased on your 4Life ID paid as instant upfront discount on your order.

*Distributor earnings vary as a result of numerous factors. Earnings statements made in this brochure are not intended to guarantee a particular outcome, but rather show what is possible based on a broad range of 4Life distributors' historical data, personal commitment, and skill level. All references to income, implied or stated, through the Life Rewards Plan are for illustration purposes only.

**LP: The commissionable sales value assigned to 4Life® products

1\$ payout would be equal to ₹43/-

DIAMOND

As a Diamond, you begin to qualify for Infinity Payouts, which means additional earning potential for you. As you share products, you'll have the capacity to earn more money and really start growing your own organization.*

Requirements to Qualify

- Maintain a monthly minimum of 100 PV
- Personally enroll a total of six distributors, three of which must be on your frontline, who also maintain 100 PV
- Accrue a three-level volume of 3,000 LP each month without compression

6 Distributors

12 Distributors

18 Distributors

18 Distributors

You

1st Level

2nd Level

3rd Level

4th
Generation



250 PV

25%	x 150 LP [#]	=	₹1612
2%	x 300 LP ^{**}	=	₹1032
25%	x 900 LP ^{**}	=	₹2900
5%	x 2700 LP ^{**}	=	₹3870
6%	x 2700 LP ^{**}	=	₹4644



Example income: ₹24058 per month (not including retail profit & Builder Bonus)

1\$ payout would be equal to ₹43/-

[#]For Rapid Reward :- 25% paid on any LPs over 100LP purchased on your 4Life ID paid as instant upfront discount on your order.
^{*}Distributor earnings vary as a result of numerous factors. Earnings statements made in this brochure are not intended to guarantee a particular outcome, but rather show what is possible based on a broad range of 4Life distributors' historical data, personal commitment, and skill level. All references to income, implied or stated, through the Life Rewards Plan™ are for illustration purposes only.

^{**}LP: The commissionable sales value assigned to 4Life® products

PRESIDENTIAL DIAMOND

At 4Life®, a Presidential Diamond is like the president of his or her own company. You take responsibility for making sure your team members are working toward a common goal. The foundation that you have built as you share 4Life products will enable you to reach the International Diamond rank and beyond.*



250 PV

Requirements to Qualify

- Maintain a monthly minimum of 100 PV
- Personally enroll a total of eight distributors, four of which must be on your frontline, who also maintain 100 PV
- Accrue a three-level volume of 10,000 LP without compression
- Have two qualified Diamond distributors in separate legs

8 Distributors

36 Distributors

72 Distributors

96 Distributors

You	25%	x 150 LP*	=	₹1612
1 st Level	2%	x 1600 LP**	=	₹1376
2 nd Level	25%	x 3600 LP**	=	₹38700
3 rd Level	5%	x 7200 LP**	=	₹15480
4 th Generation	12%	x 9600 LP**	=	₹49536



Example income: ₹106704 per month (not including retail profit & Builder Bonus)

1\$ payout would be equal to ₹43/-

*For Rapid Reward :- 25% paid on any LPs over 100LP purchased on your 4Life ID paid as instant upfront discount on your order.

**Distributor earnings vary as a result of numerous factors. Earnings statements made in this brochure are not intended to guarantee a particular outcome, but rather show what is possible based on a broad range of 4Life distributors' historical data, personal commitment, and skill level. All references to income, implied or stated, through the Life Rewards Plan™ are for illustration purposes only.

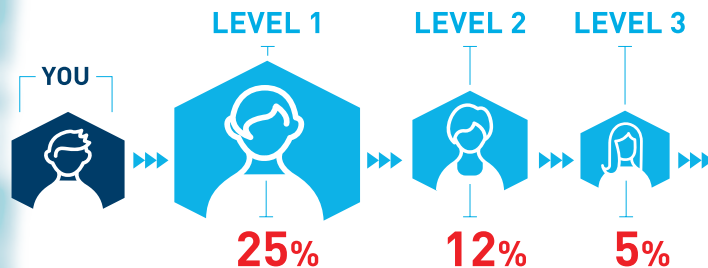
**LP: The commissionable sales value assigned to 4Life® products

RAPID REWARDS™

With Rapid Rewards, you earn 25% commission on the first LP order of every new Preferred Customer you personally enroll.

You also earn 12% on the first LP order of every new Preferred Customer on your second level, and 5% on the first LP order of every new Preferred Customer on your third level.

Rapid Rewards is paid the very next day to your 4Life account when you've qualified with 100 PV in the current month.



Effective January 1, 2020. The first, second, and fourth level payouts for the first LP orders are shifted. The enroller receives 25% and the immediate upline of the enroller receives 12%. The next two immediate upline distributors receive 5% and 2%, respectively. The remaining payout continues according to the Life Rewards Plan until all levels are paid out. To be eligible to receive a Rapid Rewards payment the very next day, a distributor must have 100 PV in the current month.

INSTANT DISCOUNT

Both Preferred Customers and distributors receive a 25% instant discount—at checkout—on all personal volume over 100 LP.

Example

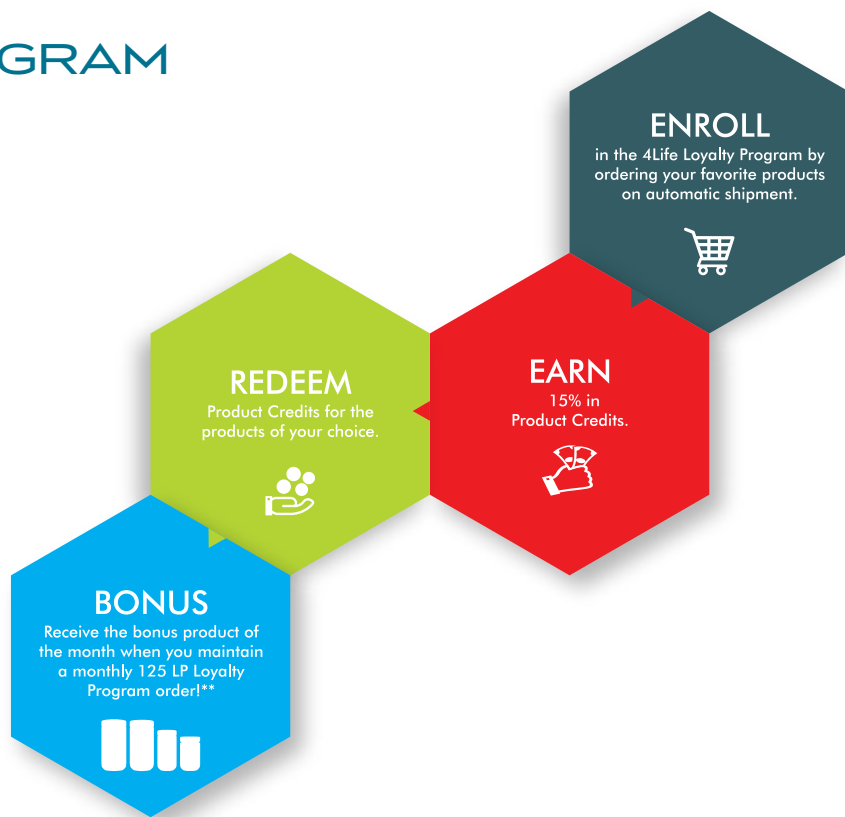


*The instant discount is not applicable to your first order with 4Life.

4LIFE LOYALTY PROGRAM

Earn free products when you participate in the 4Life Loyalty Program! Visit www.4life.com/loyalty for details and to enroll. Benefits include the following:

- Enjoy convenient monthly shipments.
- Enjoy 15% in free Product Credits.
- Get a free bonus product of the month with a 125 LP Loyalty Program order.**



** Get free bonus product if your current month & previous month Loyalty orders are minimum 125 LP.

BUILDER BONUS

The Builder Bonus leverages the power of Me and My 3™-you and your personally enrolled Preferred Customers and distributors-to help increase enrollment, encourage duplication, and support retention.

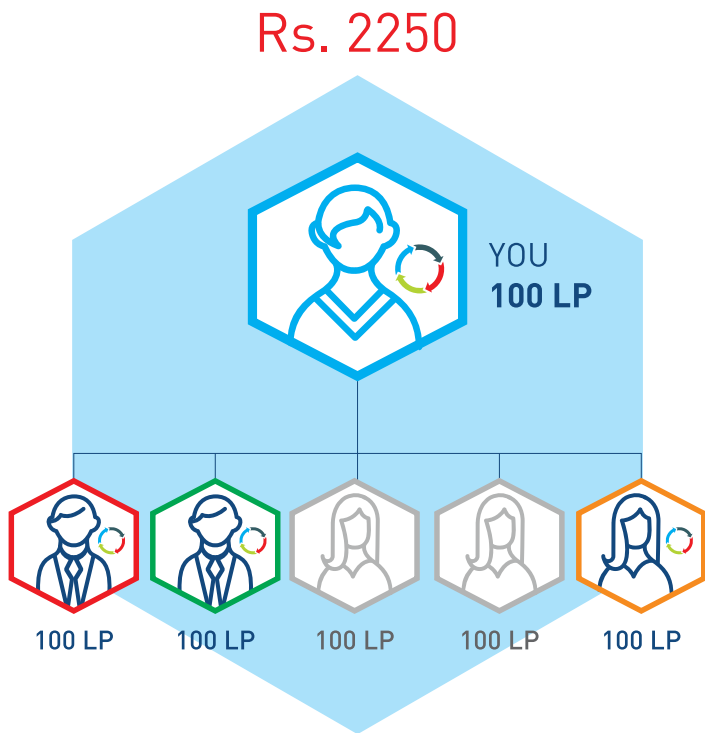
To earn the Builder Bonus on a monthly basis, you must qualify at the Builder rank, receive a 100 LP 4Life Loyalty Program order, and fulfill the required Team Volume.*

A distributor may earn each month either the Rs. 2250, Rs. 9000, or Rs. 36000 bonus, but not all three at one time.

Rs. 2250 Builder Bonus

To earn Rs. 2250:

- Should have 3 personally enrolled Preferred Customers or distributors on your frontline, each with at least 100 LP in Loyalty Program orders, and have 600 LP in Team Volume.
- This bonus is available to distributors with a rank of Builder.

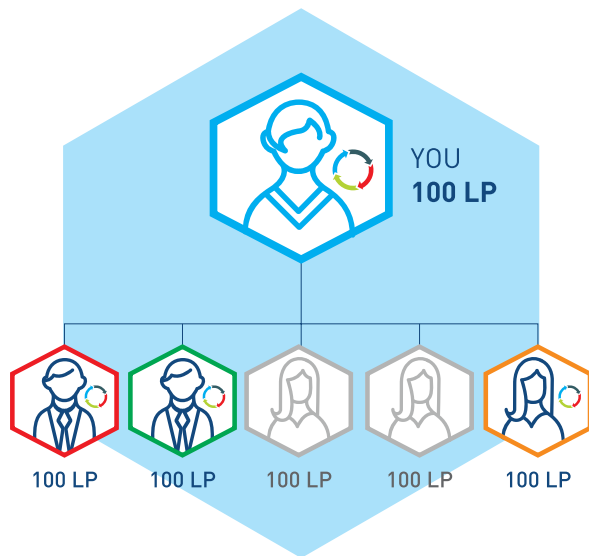


Rs. 9000 Builder Bonus

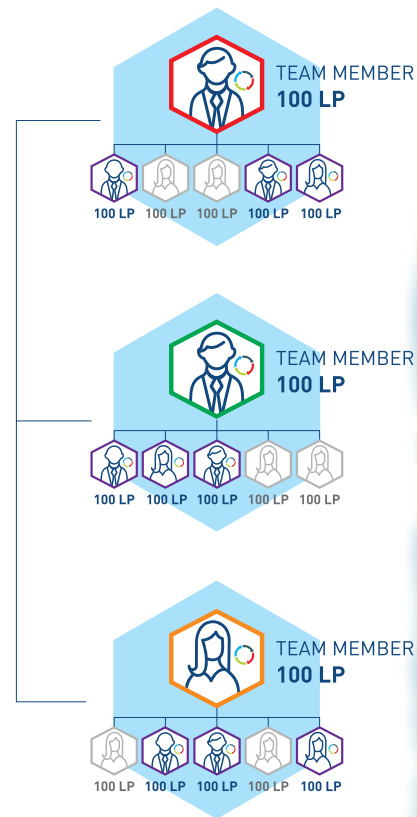
To earn Rs. 9000:

- Your 3 frontline distributors (with 100 LP Loyalty Program order) must each have 3 qualified (100 LP Loyalty Program order), personally enrolled Preferred Customers or distributors on their frontline with a minimum of 600 LP in Team Volume.
- This bonus is available to distributors with a rank of Builder or Diamond.

Rs. 2250



Rs. 9000

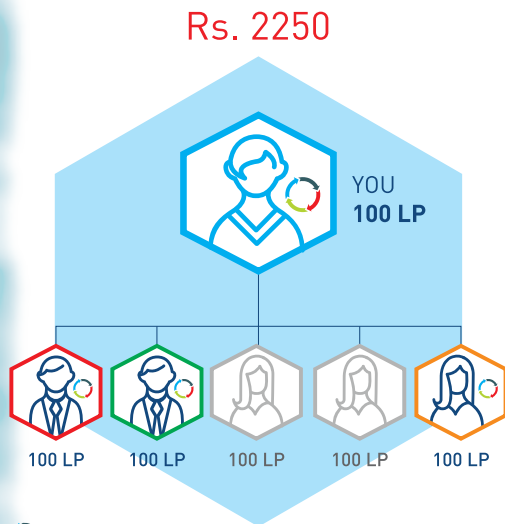


 = Loyalty Program order

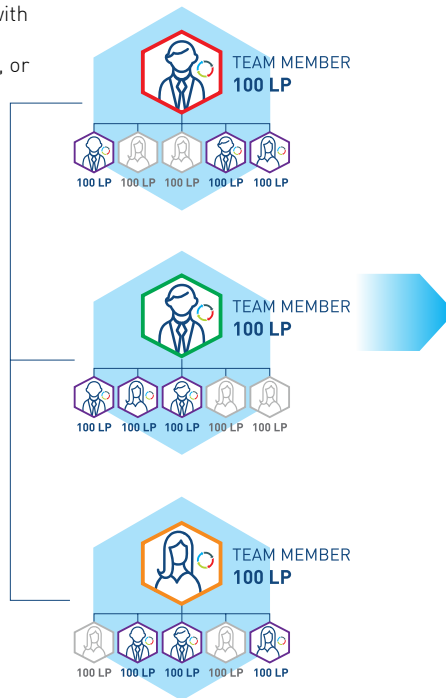
Rs. 36000 Builder Bonus

To earn Rs. 36000:

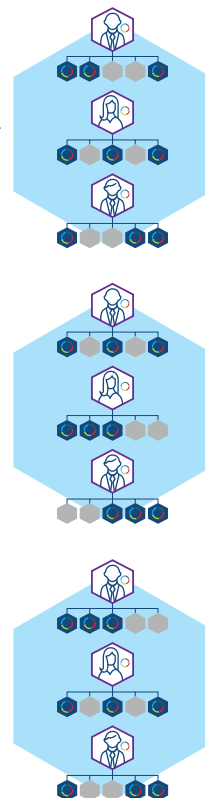
- Your 9 qualified distributors (with 100 LP Loyalty Program order) on your second level must each have 3 qualified (100 LP Loyalty Program order), personally enrolled Preferred Customers or distributors under them with a minimum of 600 LP in Team Volume.
- This bonus is available to distributors with a rank of Builder, Diamond, or Presidential Diamond.



Rs. 9000



Rs. 36000



RETAIL SUCCESS

EVERYONE CAN
BENEFIT FROM
4LIFE PRODUCTS, EVEN
IF THEY AREN'T INTERESTED
IN THE BUSINESS
OPPORTUNITY.



Benefits of retailing 4Life® products:

- Earn upto 33% in retail profit when you sell 4Life product at MRP to your customers.
- Earn a 25% Commission as upfront instant discounts on product purchases over 100LP.
- Share the benefits of exclusive 4Life Transfer Factor® products.
- Build a solid customer base.
- Give yourself a bonus by reselling free products redeemed and Free Bonus product every month through the Loyalty Program.

RETAIL SALES TIPS

- ① Use our exclusive and unique tools to share 4Life® products with others. Customers will recognize the advantage of purchasing 4Life products, and they can become great referral sources to share the products with others.

TIP: Order tools on india.4life.com.

- ② Purchase 4Life product packs to receive discounted distributor pricing and maximize your profitability.
- ③ Stay in contact with customers through social media and email. Remind them when you are placing a product order. Include a 4Life product catalog in their orders. share videos, images, PDFs, and more ... all from your mobile device with the 4Life Connect App.

- ④ Be “a product of the product” so you can better address customer needs. Ask questions about lifestyle and wellness goals, and then suggest product solutions.
- ⑤ Host a home meeting. Bring products to sell, catalogs to share, and hand out business cards with your contact information and my4life.com website information.



Incentive Trips

In addition to the opportunity to earn a part-time or full-time income, world-class incentive trips to exotic locations are a key part of the recognition and rewards program at 4Life.*



*Less than 1% of 4Life distributors qualify for incentive trips.



TOGETHER, BUILDING PEOPLE™



★ 8 0 7 3 2 ★